

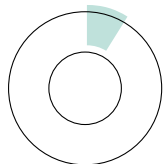
ADHD Resources

Diagnosing and treating ADHD isn't easy, but we have the tools to help!

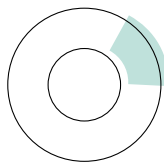


After multiple teacher conferences, failed friendships, family stress, and sleepless nights many parents are coming to you with questions about ADHD—and you have the enormous task of finding the answers. Unfortunately, the process of diagnosing ADHD isn't always cut and dry, and because its symptoms are situational and sometimes viewed subjectively, it often needs to be approached from many angles. ADHD diagnoses are on the rise, and it's critical to have the right tools to identify and treat both the disorder itself and the issues often surrounding it.

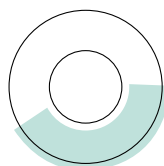
ADHD by the numbers



The 2016 National Survey of Children's Health (NSCH) found that **9.4% of children between ages 2-17** have been diagnosed with ADHD.



Up to 17.5% of the children surveyed by the CDC were not receiving medication or mental health therapy to treat their diagnosed ADHD.



40% of children who have ADHD have at least one parent who has ADHD.



Contents

- The tools you need to dig deeper..... 4
- Rating Scales 5
- Task-Oriented Tests..... 6
- Interventions 7
- Progress Monitoring..... 8
- Digital Assessments..... 9
- Contact us..... 12



The tools you need to dig deeper

While there is no set-in-stone process for the assessment and treatment of ADHD, there is a research-based path that is typically followed. Take some time to explore each step and the products that are most often used.



I RATING SCALES

Ratings scales provide subjective information on how the examinee performs in multiple settings: the examinee's self-perspective, teachers' perspective, and parents' perspective.

Behavioral Assessment System for Children – Third Edition

BASC-3

A comprehensive set of rating scales and forms, BASC-3 helps you understand the behaviours and emotions of children and adolescents.

Completion time: 10-20 minutes (TRS and PRS), 30 minutes (SRP)

Platform: Available on Q-global



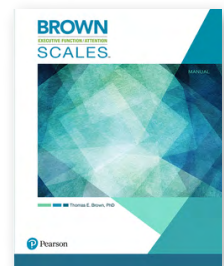
Brown Executive Function/Attention Scales

Brown EF/A Scales

Brown Executive Function/Attention Scales (Brown EF/A Scales™) helps screen and assess a wider range of impairments of executive functioning. Brown EF/A Scales™ measures DSM-5 symptoms of ADHD along with less apparent impairments of executive functioning.

Completion time: 10–15 minutes

Platform: Available on Q-global



Delis-Rating of Executive Functions

D-REF

Delis-Rating of Executive Functions (D-REF) lets you quickly and easily administer, score, and report the frequency of observed behaviours that identify executive function problems in children and adolescents.

Completion time: 5-10 minutes per form



I TASK-ORIENTED TESTS

Task-oriented tests directly observe key behaviors that the examinee exhibits and provide objective, quantifiable data to help with treatment planning.

Test of Everyday Attention for Children, Second Edition

[TEA Ch2](#)

The Test of Everyday Attention for Children, Second Edition (TEA-Ch2) is the gold-standard test of attention for children, which uniquely measures separable aspects of attention

Completion time: not on pdf

Platform: Available on Q-global



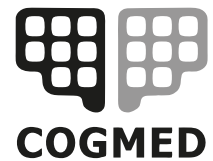
I INTERVENTIONS

An effective treatment plan needs to be established, and just as each child is unique, as are the methods of treating them for ADHD. In addition to medication and dietary changes, research has found that working memory and attention training—as well as emotional skills building tools—are highly effective.

Cogmed Working Memory Training™ [Cogmed](#)

Cogmed Working Memory Training (Cogmed) provides an evidence-based program for helping children, adolescents, and adults sustainably improve attention by training their working memory. Cognitive neuroscience, combined with innovative computer game design and close professional support, enables Cogmed to deliver substantial and lasting benefits to clients.

Completion time: Variable protocols allow for individualised training schedules to meet the specific needs of trainees and their families. 25 to 50 minutes per day, 3-5 days per week.



Working Memory Training

BASC-3 Intervention Guide & Materials [BASC-3](#)

BASC-3 Intervention Guide & Materials provides school psychologists with extensive information on the most common behavioural and emotional issues.

Completion time: Variable protocols allow for individualised training schedules to meet the specific needs of trainees and their families. 25 to 50 minutes per day, 3-5 days per week.



I PROGRESS MONITORING

Ensuring the effectiveness of a child's plan is crucial to their success! Continue to use these tools to monitor and track the effects of your intervention plan.

BASC-3 Flex Monitor

BASC-3

BASC-3 Flex Monitor is a new, flexible way to monitor changes in behaviour and emotional functioning. It enables psychologists and professionals in school or clinical environments to monitor and track effects of behavioural intervention plans

Completion time: 5 minutes for each standard form; custom forms vary 25 to 50 minutes per day, 3-5 days per week.

Platform: Available on Q-global



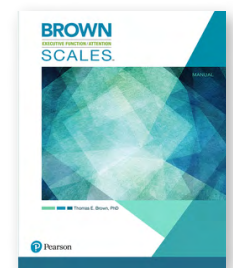
Brown Executive Function/Attention Scales

Brown EF/A Scales

Brown Executive Function/Attention Scales (Brown EF/A Scales™) helps screen and assess a wider range of impairments of executive functioning. Brown EF/A Scales™ measures DSM-5 symptoms of ADHD along with less apparent impairments of executive functioning.

Completion time: 10–15 minutes

Platform: Available on Q-global



Go Digital with Q-interactive®

Leading the way in digital assessment

With **Q-interactive®**, you can administer interactive assessments with an intuitive portable system that uses two iPads connected to each other via bluetooth to display stimulus material. You use one iPad to access the test administration instructions, score and record responses, and control visual stimuli. Your client uses the other iPad to view and respond to stimuli.

Q-interactive® offers:

- Flexibility to edit assessment batteries 'on-the-fly' even when offline
- Greater accuracy scoring and view test results instantly
- Increased engagement from examinees
- Lightweight and portable – no need to carry heavy kits



Web-based Scoring and Reporting with Q-global®

Pearson Clinical Assessment developed **Q-global®** for professionals, who want the ease, reliability, and security of a cost-effective, web-based platform for their administration, scoring and reporting needs.

Q-global® is an administration, scoring and reporting platform that features leading assessments on a simple-to-use, web-based interface that is accessible anytime, anywhere.

Q-global® offers you:

- 24/7 secure, web-based access to all your examinee and report data.
- Portability – Q-global® is web-based and not tied to a specific device.
- Online ordering through Pearson's current e-Commerce site and subsequent automatic customer account setup.
- On-demand, reliable scoring and expansive and comprehensive reporting solutions not available through hand-scoring.
- The ability to administer selected assessments on screen and/or send to an examinee, parent or caregiver to complete remotely

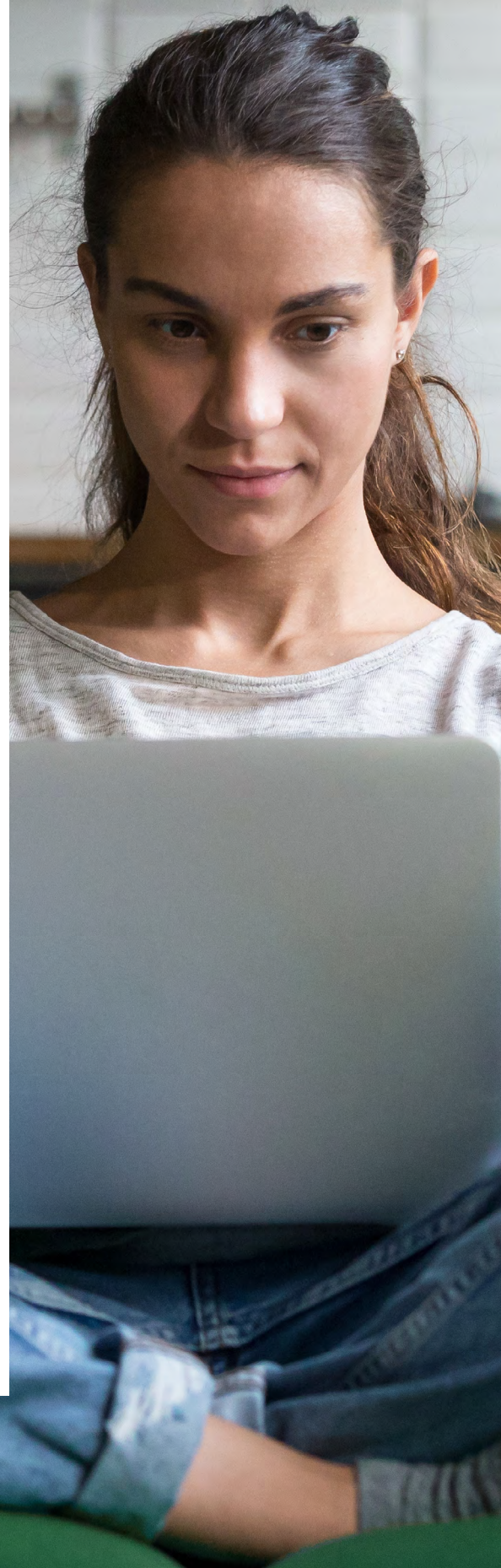


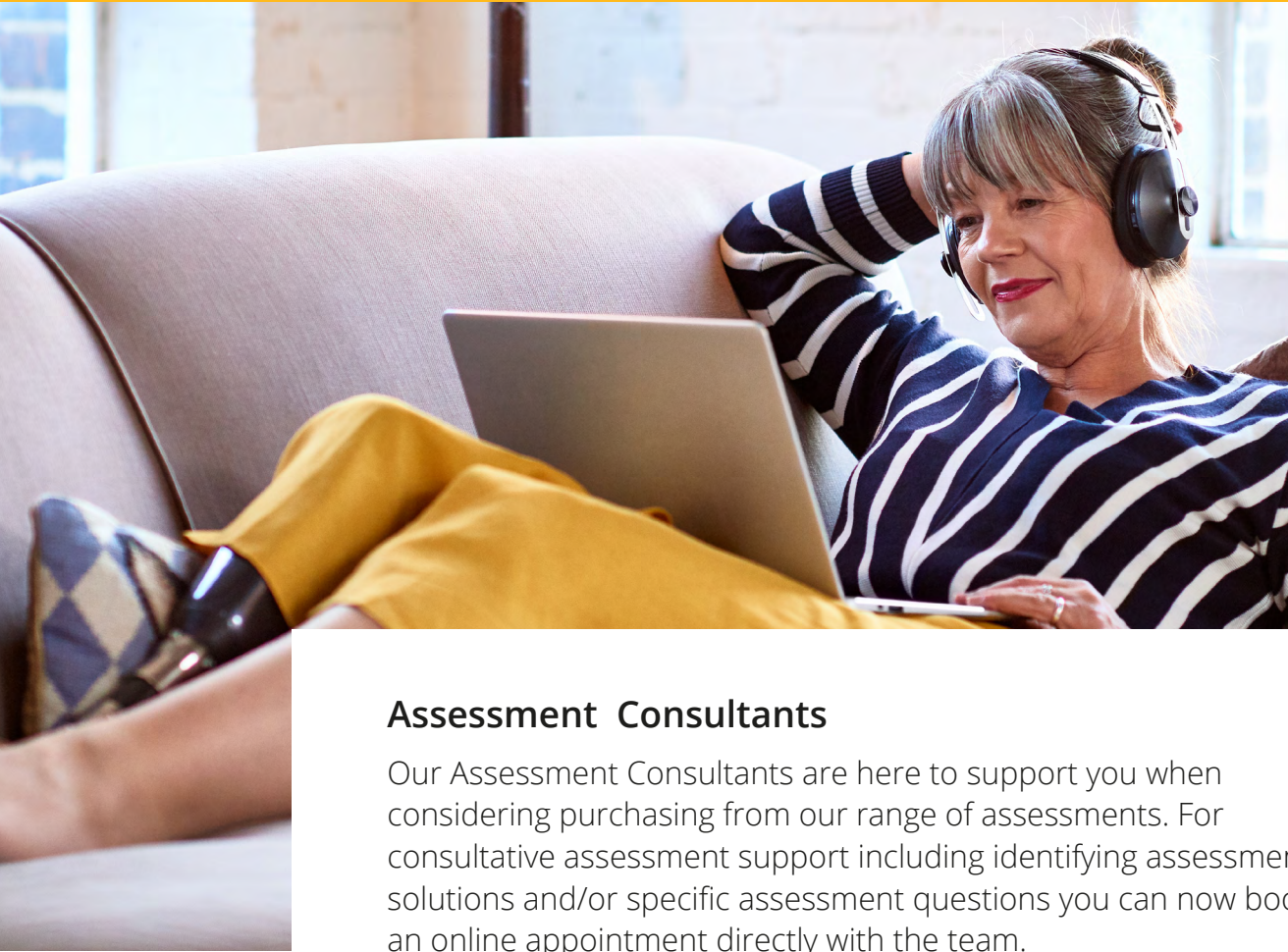
Take a look at which assessments can be used digitally via Q-global®

Take a look at our digital decision tree to find out the digital options available for all of our assessments

We will automatically create your Q-global account for you when you purchase your first Q-global resource.

Tutorial guides on how to use Q-global are available in platform and you also can contact one of our assessment consultants for a demo.





Assessment Consultants

Our Assessment Consultants are here to support you when considering purchasing from our range of assessments. For consultative assessment support including identifying assessment solutions and/or specific assessment questions you can now book an online appointment directly with the team.

Stay Connected



[Facebook](#)



[Linkedin](#)



[Twitter](#)



[Pearsonclinical.co.uk](https://www.pearsonclinical.co.uk)

