



# Helping you to support children in reaching their milestones

Tools to help with their early years  
development





# Contents

- Cognitive and developmental delays in early childhood .....Page 3 - 7
- Early identification of social emotional development in children .....Page 8 - 10
- Developing their language acquisition skills .....Page 11 - 14
- Go digital .....Page 15 - 16
- Important – you must be registered with Pearson Assessment before you can order .....Page 17
- Contact us .....Page 18





## Cognitive and developmental delays in early childhood

Cognition and mobility are two key factors that allow children to learn and interact with the world around them.

From their first smile to their first steps, these key milestones can help to indicate developmental delays which may impact a child throughout their lifetime.

Cognition and mobility issues can be recognized at an early age, allowing for a plan to be put in place to help support the child during their formative years.





# COGNITIVE AND DEVELOPMENTAL DELAYS IN EARLY CHILDHOOD

## [Bayley Scales of Infant and Toddler Development, Third Edition](#)

### **Bayley-III**

Bayley Scales of Infant and Toddler Development, Third Edition (Bayley-III) examines all the facets of a young child's development. Children are assessed in the five key developmental domains of cognition, language, social-emotional, motor and adaptive behaviour.

**Completion time:** Individual - 30 minutes to 90 minutes (depending upon the age of child)

**NOTE:** Bayley-4 is coming soon

**Platform:** Available on Q-global



## [Bayley Scales of Infant and Toddler Development - Third Edition \(Bayley-III\) Motor Scale Kit](#)

### **Bayley-III**

The Bayley Scales of Infant and Toddler Development - Third Edition (Bayley-III Motor Scale Kit) is for use by clinicians primarily assessing the motor domain of developing children.

**Completion time:** Individual - 10 – 20 minutes

**Administration:** Individual - 10 – 20 minutes



## [Cogmed Working Memory Training](#)

### **Cogmed**

Cogmed Working Memory Training (Cogmed) provides an evidence-based program for helping children, adolescents, and adults sustainably improve attention by training their working memory. Cognitive neuroscience, combined with innovative computer game design and close professional support, enables Cogmed to deliver substantial and lasting benefits to clients.

**Completion time:** Variable protocols allow for individualised training schedules to meet the specific needs of trainees and their families. 25 to 50 minutes per day, 3-5 days per week.





# COGNITIVE AND DEVELOPMENTAL DELAYS IN EARLY CHILDHOOD

## Preschool Language Scale - Fifth Edition

The Preschool Language Scale - Fifth Edition (PLS-5 UK) offers you a comprehensive developmental language assessment, with items that range from pre-verbal, interaction-based skills to emerging language and early literacy

**Completion time:** 45 – 60 minutes



## Pediatric Evaluation of Disability Inventory Computer Adaptive Test

### **Pediatric Evaluation of Disability Inventory Computer Adaptive Test**

The PEDI-CAT is a computer adaptive caregiver report which measures Daily Activities, Mobility, Social/Cognitive, and Responsibility. It's designed for use with children and youth with a variety of physical and/or behavioural conditions.

**Completion time:** 10 – 20 minutes

**Platform:** Available on Q-global



## The Roll Evaluation of Activities of Life

### **The REAL**

The Roll Evaluation of Activities of Life (REAL™) offers a useful screening instrument to help professionals assess children's ability to care for themselves at home, at school, and in the community.

**Completion time:** 15 – 20 minutes



# COGNITIVE AND DEVELOPMENTAL DELAYS IN EARLY CHILDHOOD

## [Bruininks-Oseretsky Test of Motor Proficiency | Second Edition](#)

### **BOT-2**

The Bruininks-Oseretsky Test of Motor Proficiency, Second Edition (BOT™-2) delivers the most precise and comprehensive measure of motor skills, both gross and fine. It contains subtests and challenging game-like tasks and is very easy to administer

**Completion time:** Short Form - 15 – 20 minutes, Complete Form - 45 – 60 minutes, Fine Motor Form - 25 – 30 minutes, Gross Motor Form 25 – 30 minutes

**Platform:** Available on Q-global



## [Beery-Buktenica Developmental Test of Visual-Motor Integration | Sixth Edition](#)

### **BEERY VMI**

Internationally respected and backed by decades of research and clinical use, the Beery-Buktenica Developmental Test of Visual-Motor Integration, Sixth Edition (BEERY™ VMI) helps assess the extent to which individuals can integrate their visual and motor abilities

**Completion time:** Short Format and Full Format tests: 10–15 minutes each; supplemental Visual Perception and Motor Coordination tests: 5 minutes each



## [Mullen Scales of Early Learning](#)

### **Mullen Scales**

Mullen Scales of Early Learning is a developmentally integrated system that assesses language, motor, and perceptual abilities, measures cognitive ability and motor development quickly and reliably

**Completion time:** 15 minutes (1 year); 25 – 35 minutes (3 years); 40 – 60 minutes (5 years)



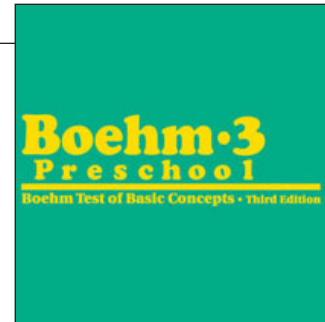


# COGNITIVE AND DEVELOPMENTAL DELAYS IN EARLY CHILDHOOD

## Boehm-3 Preschool

The Boehm-3 Preschool test helps identify children who lack understanding of basic relational concepts, for early intervention and increased chance of success in school.

**Completion time:** 20 – 30 minutes  
(5 years)



## Kaufman Survey of Early Academic and Language Skills

### **K-SEALS**

The Kaufman Survey of Early Academic and Language Skills (K-SEALS) is a valuable tool for testing school readiness, identifying gifted children, evaluating program effectiveness, and researching children's early development

**Completion time:** 15 – 25 minutes





# Early identification of social emotional development in children

Social emotional development is an important aspect that helps young people develop, learn and grow. Many of these issues can be identified before the child enters the school system, such as limited interaction with their peers and adults, as well as a number of behavioural issues.

Early identification and intervention are key factors that enable these children to gain the skills they need to succeed in life.





# EARLY IDENTIFICATION OF SOCIAL EMOTIONAL DEVELOPMENT IN CHILDREN

## [Behavior Assessment System for Children | Third Edition](#)

### **BASC-3**

A comprehensive set of rating scales and forms, BASC-3 helps you understand the behaviours and emotions of children and adolescents.

**Completion time:** 10 – 20 minutes (TRS and PRS), 30 minutes (SRP)

**Platform:** Available on Q-global



## [SSIS Social-Emotional Learning Edition](#)

### **SSIS SEL**

SSIS™ Social-Emotional Learning Edition (SSIS SEL) is a comprehensive, evidence-based, social-emotional learning system that assesses key academic skills and integrates the different components with an aligned, multi-tiered intervention. Product includes Screening and Progress Monitoring Scales, Rating Forms, and Classwide Intervention Programs.

**Completion time:** 10 – 25 mins

**Platform:** Available on Q-global



## [Vineland Adaptive Behavior Scales | Third Edition](#)

### **Vineland-3**

Vineland Adaptive Behavior Scales, Third Edition (Vineland-3) is the leading instrument for supporting the diagnosis of intellectual and developmental disabilities. Vineland-3 not only aids in diagnosis, but provides valuable information for developing educational and treatment plans.

**Completion time:** Approximately 20 minutes for Interview Form; 10 minutes for Parent/Caregiver and Teacher Forms

**Platform:** Available on Q-global



# EARLY IDENTIFICATION OF SOCIAL EMOTIONAL DEVELOPMENT IN CHILDREN

## Sensory Profile 2

The Sensory Profile™ 2 family of assessments provides standardised tools to help evaluate a child's sensory processing patterns in the context of home, school, and community-based activities.

**Completion time:** 5 – 20 minutes

**Platform:** Available on Q-global







## Developing their language acquisition skills

Language skills are comprised not only of the child's ability to communicate, but also to understand social cues and gestures. There are many factors that can impact a child's ability to communicate, some of which can be improved with additional support and practice.

There are many key milestones that can make up a child's communication journey throughout the years. You can find a comprehensive list on **ICAN's website**.



# DEVELOPING THEIR LANGUAGE ACQUISITION SKILLS

## [Expressive Vocabulary Test | Third Edition](#)

### EVT-3

Expressive Vocabulary Test, Third Edition (EVT-3) is a norm-referenced and individually administered test of expressive vocabulary and word retrieval based on words in Standard American English.

**Completion time:** 10 – 15 Minutes

**Platform:** Available on Q-global and Q-interactive



## [CELF range](#)

CELF range assists with overcoming language barriers regardless of age or background.

**Platform:** Available on Q-global and Q-interactive.



## [Preschool Language Scale - Fifth Edition](#)

### PLS-5 UK

The Preschool Language Scale - Fifth Edition (PLS-5 UK) offers you a comprehensive developmental language assessment, with items that range from pre-verbal, interaction-based skills to emerging language and early literacy

**Completion time:** 45 – 60 minutes





# DEVELOPING THEIR LANGUAGE ACQUISITION SKILLS

## [Goldman-Fristoe Test of Articulation 3](#)

### **GFTA-3**

The Goldman-Fristoe Test of Articulation™ 3 (GFTA™-3) provides accurate scores for making diagnostic and placement decisions

**Completion time:** 5 to 15 minutes for Sounds-in-Words Section, varied for Sounds-In-Words, Intelligibility, and Stimulability sections

**Platform:** Available on Q-global and Q-interactive



## [Bayley Scales of Infant and Toddler Development, Third Edition](#)

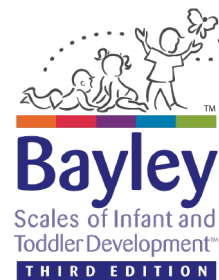
### **Bayley-III**

Bayley Scales of Infant and Toddler Development, Third Edition (Bayley-III) examines all the facets of a young child's development. Children are assessed in the five key developmental domains of cognition, language, social-emotional, motor and adaptive behaviour.

**Completion time:** Individual - 30 minutes to 90 minutes (depending upon the age of child)

**NOTE:** Bayley-4 is coming soon

**Platform:** Available on Q-global



# DEVELOPING THEIR LANGUAGE ACQUISITION SKILLS

## Bayley Scales of Infant and Toddler Development, Third Edition

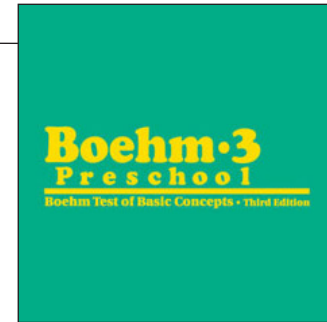
### Bayley-III

Bayley Scales of Infant and Toddler Development, Third Edition (Bayley-III) examines all the facets of a young child's development. Children are assessed in the five key developmental domains of cognition, language, social-emotional, motor and adaptive behaviour.

**Completion time:** Individual - 30 minutes to 90 minutes (depending upon the age of child)

**NOTE:** Bayley-4 is coming soon

**Platform:** Available on Q-global

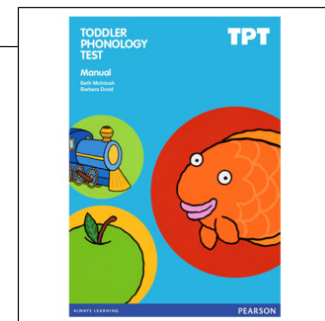


## Toddler Phonology Test

### TPT

Toddler Phonology Test (TPT) assess phonological acquisition in young children and identifies risk for phonological disorder

**Completion time:** Individual - Maximum 20 minutes

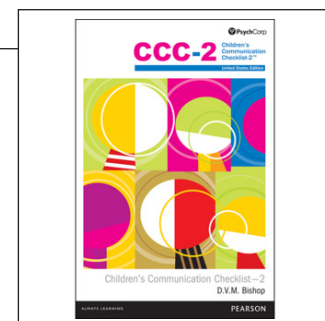


## Children's Communication Checklist

### CCC-2

Children's Communication Checklist (CCC-2) screens for communication problems in children aged 4 to 16 years

**Completion time:** 5 to 15 minutes



## Go Digital

### Why choose Q-global?

Get access to the industry's gold standard assessment tools from any computer, at any time!

Mental health specialists, educators, and other professionals use the Q-global® testing system to quickly and efficiently administer assessments, generate scores, and produce reports. Q-global® houses the industry's gold standard in assessment tools and is accessible from any computer, any time.

### How it works

You can access your Q-global account through any device connected to an up-to-date web browser. You can then manage and retrieve examinee information, administer assessments, generate scores from assessment data, and produce accurate, comprehensive assessment reports.

- On Screen Administration (OSA)
- Remote On Screen Administration (ROSA) sent via email to an examinee, parent or caregiver
- Manual entry via paper record form.
- Report generation for a number of assessments

### Perfect for your Telepractice sessions!





# I DIGITAL ASSESSMENT

## **One-system, two tablets, tons of power**

Q-interactive saves you time, while adding unprecedented flexibility, portability, convenience and efficiency. With Q-interactive™ you no longer have to simultaneously juggle cumbersome manuals, stimulus books, record forms, notepads, a stop-watch, and manipulatives to do your job.

## **How it works**

Q-interactive is a comprehensive digital system that streamlines the entire assessment process. Administration occurs using two tablets that “communicate” with each other. Use one tablet to administer instructions, record and score responses, take notes and control visual stimuli. Your student uses the other to view and respond to stimuli. Q-interactive also features a secure web portal where you create your client profiles, choose and assign assessments and also where you review scored data post assessment.

## **Features**

- Offers an interactive and engaging test experience for your students
- Captures and stores student data quickly and easily
- Provides accurate real-time scoring
- Uncompromised data security to protect your students profile.



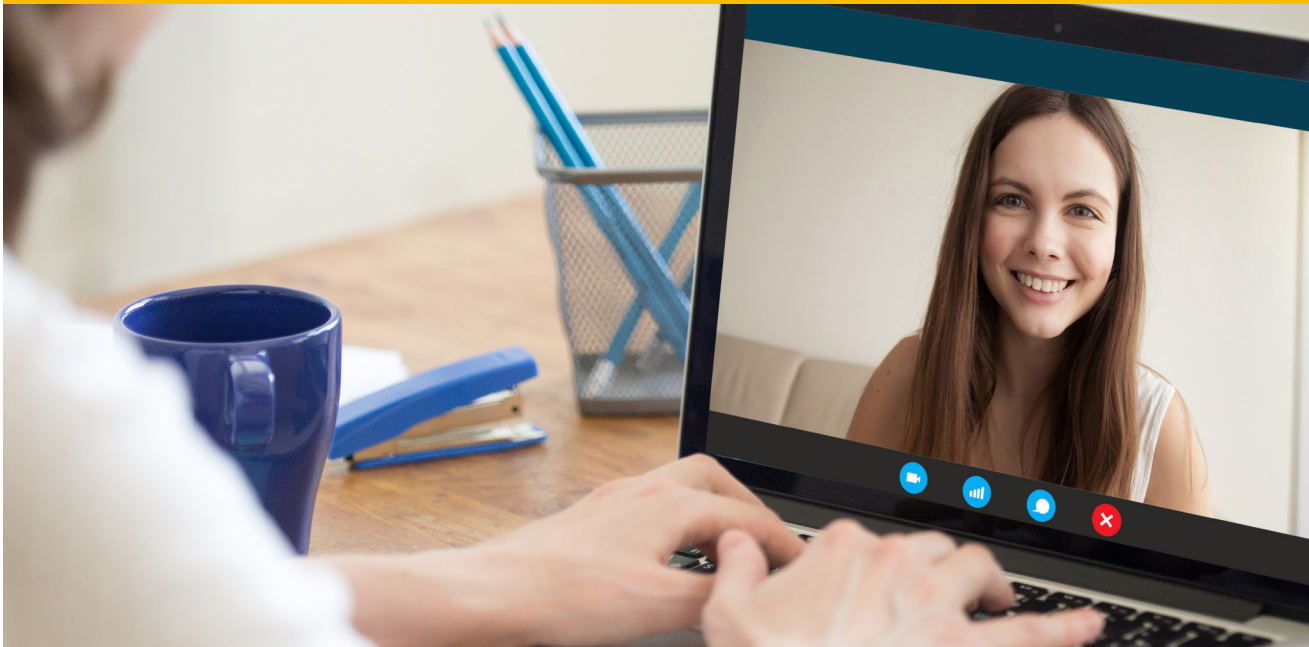
# Important – you must be registered with Pearson Assessment before you can order.

The materials in this brochure are intended for use by professionally qualified practitioners. To ensure that our materials are used with professional care and in appropriate situations, sales of materials are restricted. In accordance with the policy of organisations such as the Royal College of Speech and Language Therapists your eligibility to purchase tests is determined on the basis of training and experience.

Qualification Level	Explanation
Level A	This approval level enables you to buy our assessments that require no professional degree, accreditation, organisation membership, or license/certificate.
Level B	This approval level enables you to buy our assessments requiring A or B qualification levels.
Level C	This approval level enables you to buy all our assessments.

[Find out more on the various levels here](#)

# | Contact us



## Assessment Consultants

Our Assessment Consultants are here to support you when considering purchasing from our range of assessments. For consultative assessment support including identifying assessment solutions and/or specific assessment questions you can now book an online appointment directly with the team.

**Book your next appointment here**

## Stay Connected



[Facebook](#)



[LinkedIn](#)



[Twitter](#)



[Website](#)

